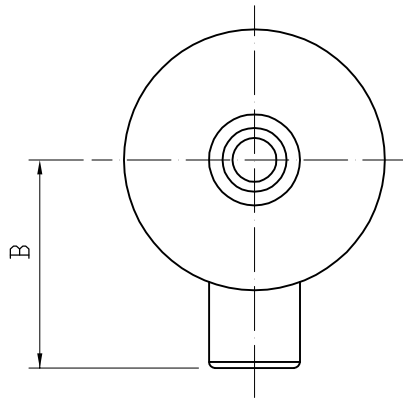
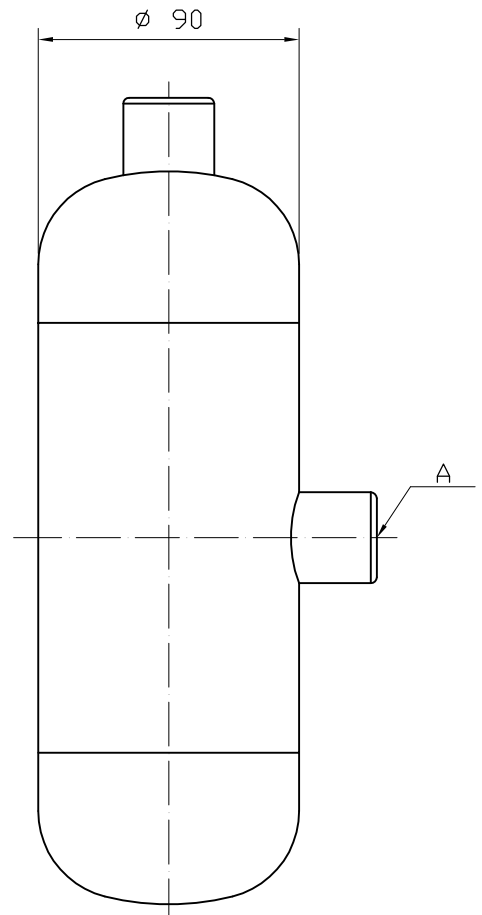
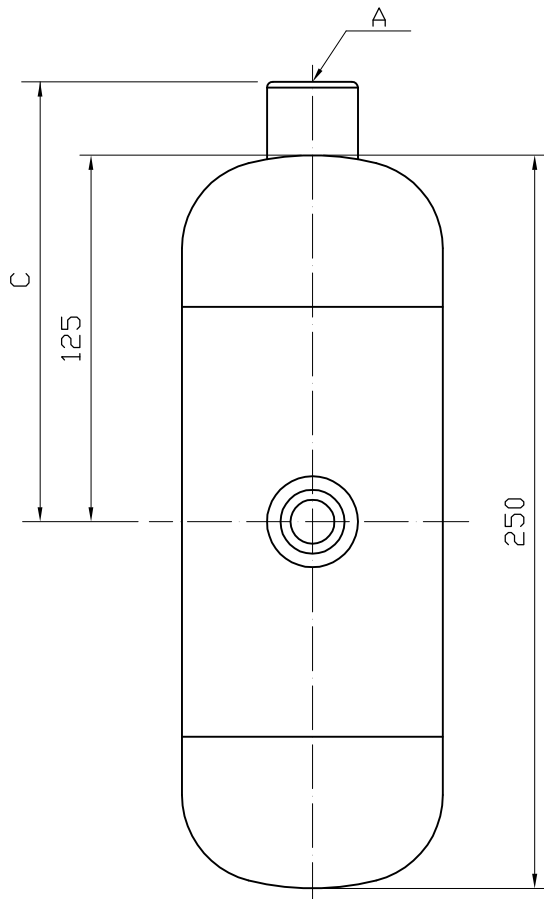


A B C D E F G



1
2
3
4
5
6
7
8
9

NOTES

MATERIAL	STEEL CARBON	BODY = ASTM A106 Gr B CONNECTION = ASTM A105 / ASTM A234 WPB
	STEEL INOX	BODY = ASTM A 240-304 (AISI 304) CONNECTION = ASTM A182-F.304 / ASTM A403-304
SUPERFICIAL FINISH	STEEL CARBON = GRAY MUNSELL N 6.5 POLYESTER STEEL INOX = BRUSHED	

1500 PSI		
A	B	C
DN 1/2 SW	71 mm	150 mm

2000 PSI		
A	B	C
DN 1/2 SW	69 mm	148 mm

3000 PSI		
A	B	C
DN 1/2 SW	65 mm	144 mm

				DRAWING	DESING	CHEKING	APPROVAL	smar
	/ /	/ /		ADEMIR	ADEMIR	CANESIN	IVAN S.	
	/ /	/ /		16 / 05 / 05	16 / 05 / 05	27 / 05 / 05	30 / 05 / 05	DS
	/ /	/ /		CUSTOMER				DRAWING N:
	/ /	/ /		EQUIPMENT: SEALING TANK STEEL / INOX				101-A-8452-00
REV	DESING	APPROVAL	AREA	DIMENSIONAL DRAWING SEALING TANK 1 RADIAL NOZZLE END 1 IN CAP DN 1/2 SW				SC SH /