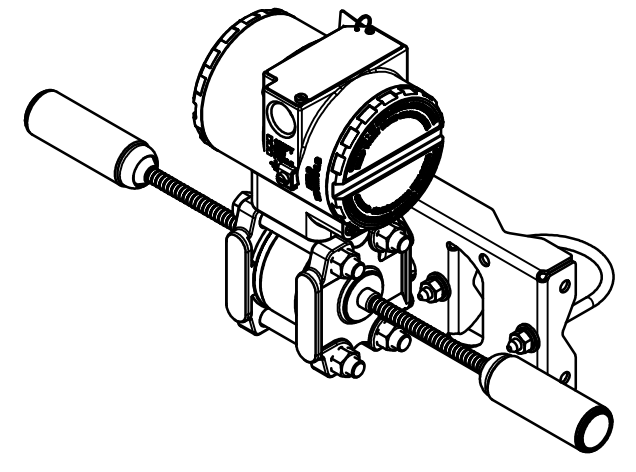
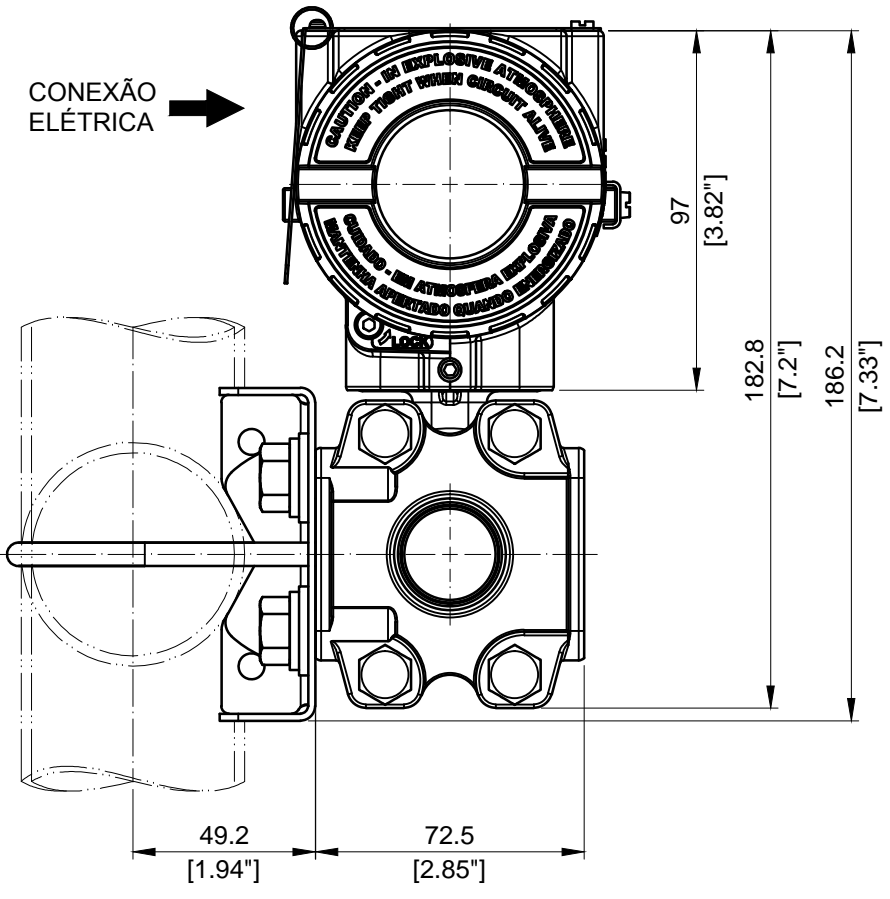
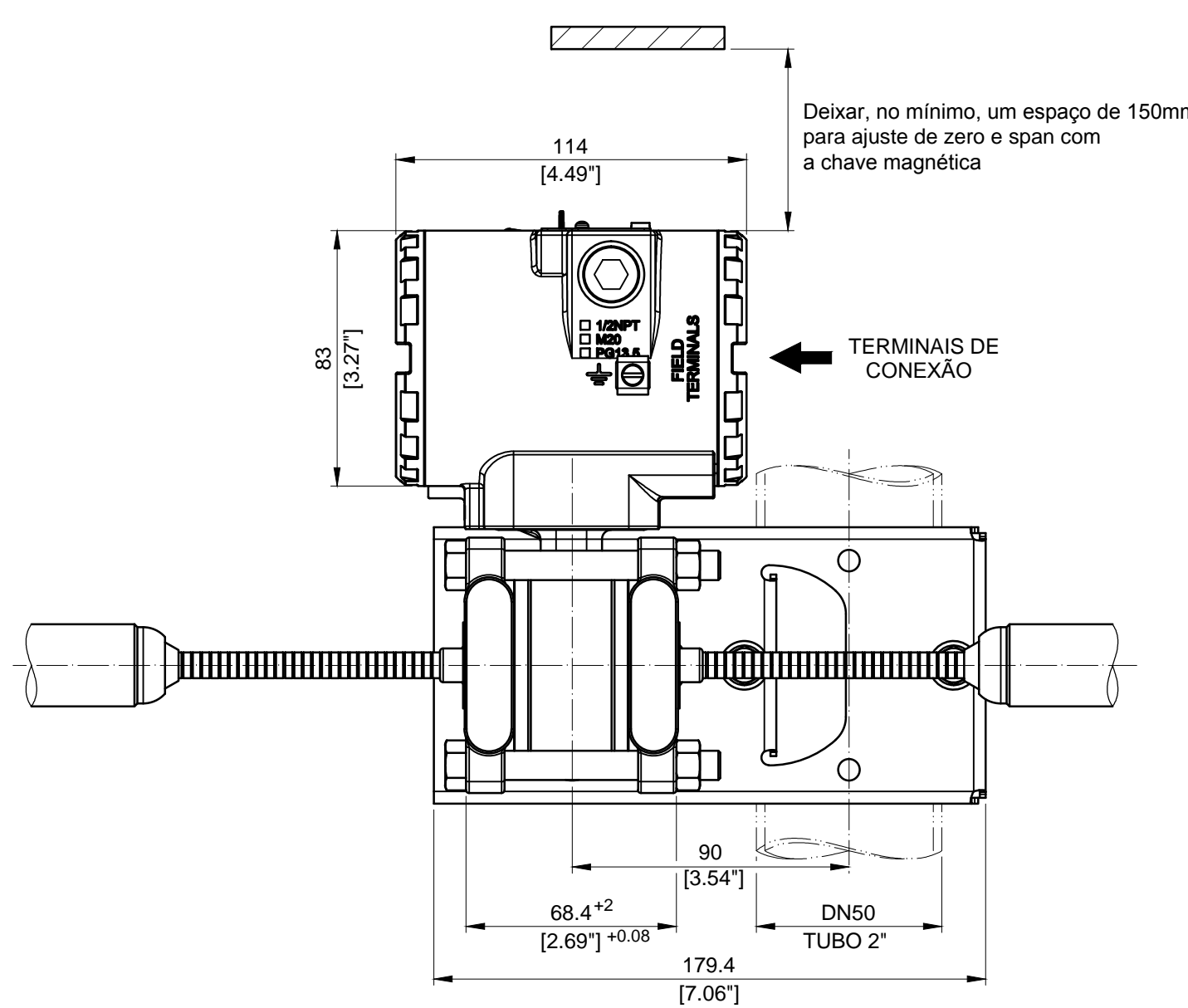



REV. 1-ALTER. SUPORTE - ALT-DM-0087/2008
 REV. 2-ALTER. GEOMETRIA FLANGES DO TRANSMISSOR - ALT-DD-0016/2010
 REV. 3-ALTER. TITULO E GEOMETRIA FLANGES - ALT-0440/14



NOTAS:
 AS DIMENSÕES SÃO EM mm (POLEGADAS)

| REV | PROJETO | APROVAÇÃO | AREA | DESENHO | PROJETO | VERIFIC. | APROVAÇÃO |  OS DESENHO N° 101-B-5399-03 ESC 1:2 FL / |
|-----|-------------------------|----------------------------|-------|---|------------------------|-------------------------|----------------------------|---|
| 3 | GUSKA 26 / 08 / 2014 | P.MISAWA 11 / 03 / 2015 | GERAL | EDNA 24 / 04 / 2006 | EDNA 24 / 04 / 2006 | GUSKA 24 / 04 / 2006 | P.MISAWA 24 / 04 / 2006 | |
| 2 | GUSKA 05 / 04 / 2010 | P.MISAWA 05 / 04 / 2010 | GERAL | CLIENTE | | | | |
| 1 | GUSKA 25 / 08 / 2008 | P.MISAWA 25 / 08 / 2008 | GERAL | EQUIPAMENTO LD300 SERIES | | | | |
| | | | | DESENHO DIMENSIONAL LD30XD - SELO VOL REDUZIDO | | | | |